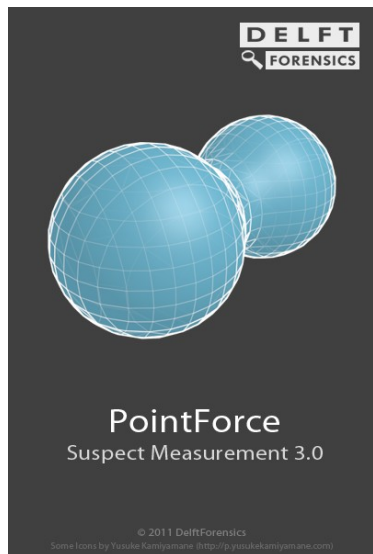


3D Suspect Measurement



With 3D Suspect Measurement, a suspect caught on a surveillance camera can be measured using a combination of 2D data and a 3D laser scan.

3D Suspect Measurement is one of the Forensic related products that DelftForensics has developed. This pointcloud software enables fusion between 2D and 3D data i.e. makes it possible to combine 3D scans with 2D flat images, in order to measure the height of a suspect caught on a surveillance camera.

To download a trial version or to read more about 3D SM, please visit:
http://www.delfttech.com/delfttech/services/software_solutions

How does 3D Suspect Measurement work?

Images from security cameras cannot be used to measure distances, but when the picture is combined with a laser scan (which is accurate within millimeters) the image becomes measurable.

SM enables the user to select common points between the pointcloud and the image so that the picture can be aligned over the scan.

Result: 2D images become measurable!

Once the image is measurable the tools "Virtual Human" and "Arrow" become available.

To quickly calculate an approximation of the suspect's length, measure its height using the arrow-tool. If the suspect's pose is not straight it is better then to use a Virtual Human as it can be posed within every body position. The user selects the position of the feet and inserts there a Virtual Human. The skeleton's position will be corrected bone by bone until it best fits the suspect's image.





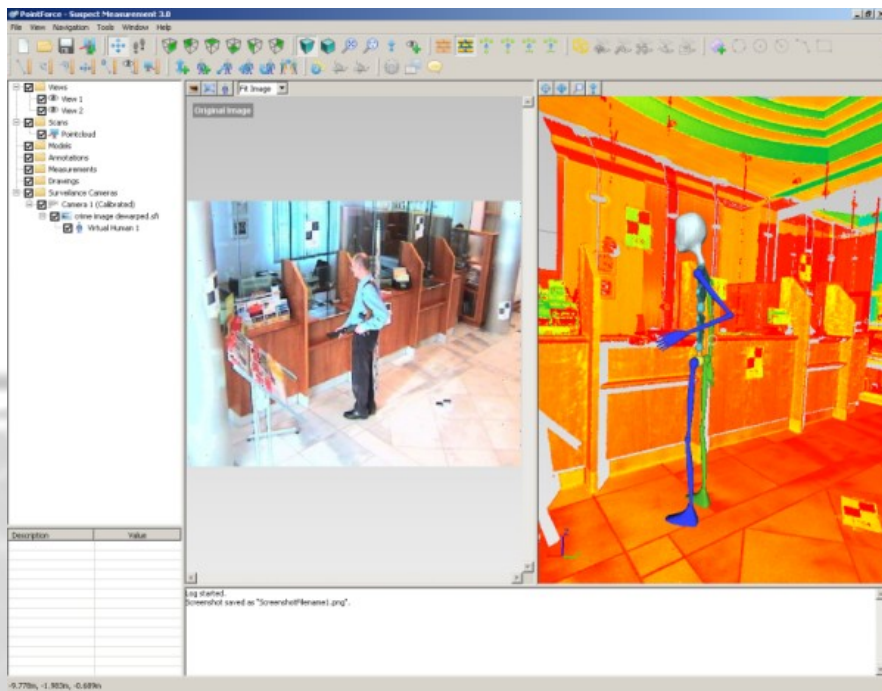
3D Suspect Measurement

Measurements & Tools

Measure distances to improve the research and the info available of the crime scene. Add annotations to point out where was evidence found.

Reports

A wizard will guide you when generating a report which summarizes the investigation. It will include snapshots of measurements taken. The report is generated within the versatile PDF format.



De-warping images

Lens distortion is fully compensated by built-in algorithms.

And now, 3D SM 3.0 available!!!

New Features

- Now also Windows 7 operating system
- Easier image navigation
- Faster loading pointclouds
- Improved text enhancement
- Now Compatible with Z+F Imager 5010 and Leica HDS 7000 as well
- Language options: English/Dutch/Spanish
- Multiple monitor support
- Easier management of scans and cameras

- Improved rendering performance
- Updated pick-point manager
- Review and adjust image/pointcloud alignment to obtain best possible calibration
- Improved method to add annotations
- Customize the project tree-structure to a best fit within own house style
- Optimal licensing system with a maximum flexibility depending on clients' needs
- Fixed or floating license; server- or client-side based license.